



# THE HEALTHCARE PREPAREDNESS PROGRAM

Region 7 Healthcare Coalition

# What is a Healthcare Coalition?

---

## WHO

Medical Director  
Regional Coordinator  
Assistant Regional Coordinator

Hospitals, EMS, Emergency Management, Public Health, Specialty Patient Referral Centers, CMHs, Dialysis, AFC/HFA, Primary Care Providers, Educational Institutions, Skilled nursing & LTC, Tribal, CERT, NGOs, Medical & Device Manufacturers & Distributors, Infrastructure Companies, & more.

## WHAT

Work with local partners in each region to prepare healthcare organizations to deliver coordinated and effective care to victims of terrorism and other public health/healthcare emergencies.

A collaborative network of healthcare organizations and their public and private response partners.

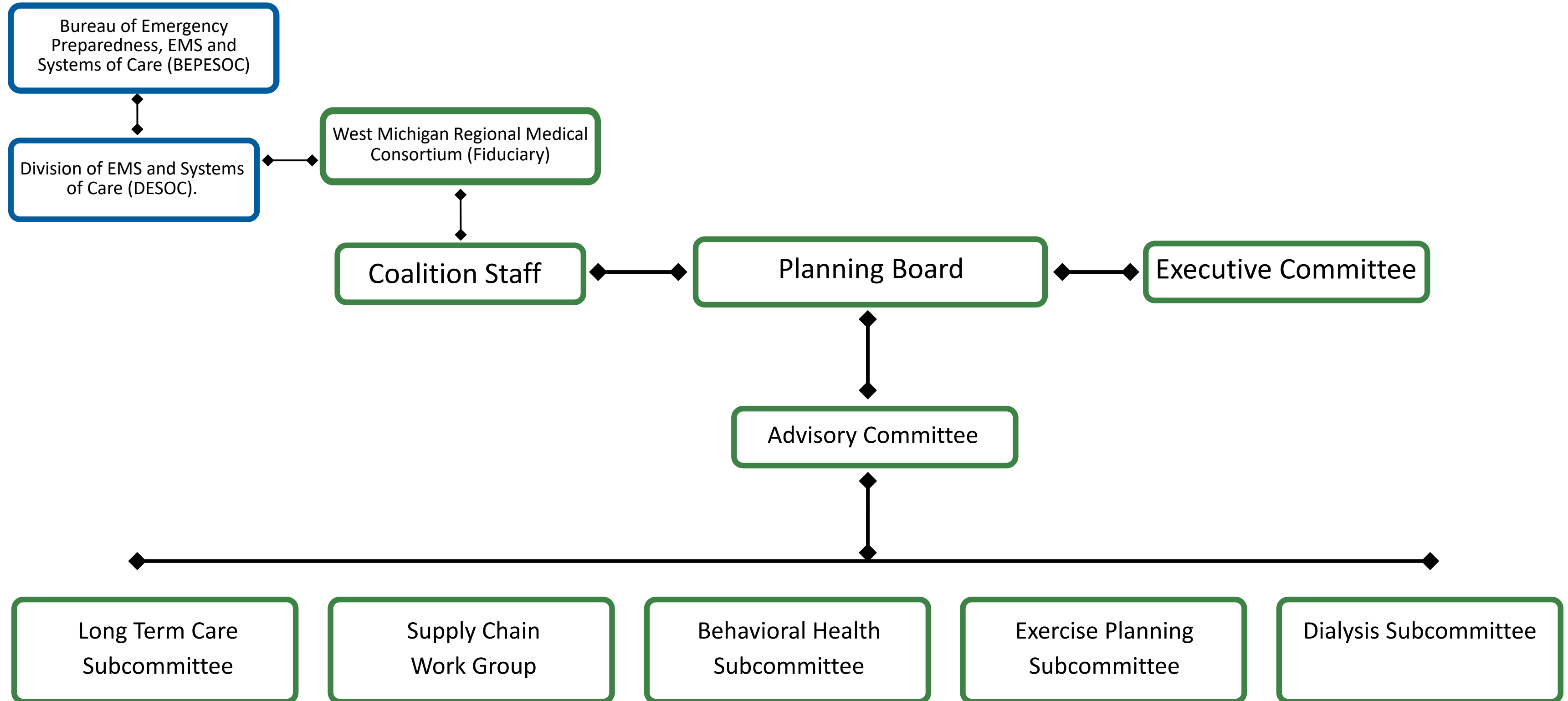
## WHY

Coordinate medical response during an incident or event, as necessary.

Assists healthcare facilities in emergency preparedness requirements including Planning, Organizing, Equipping, Training, Exercising & Evaluating. Assists in response as a multi agency coordinating group (MAC) in medical communication and coordination.

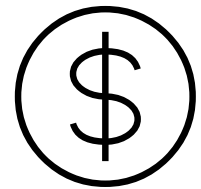
# COALITION STRUCTURE

---



# Benefits of Membership

---



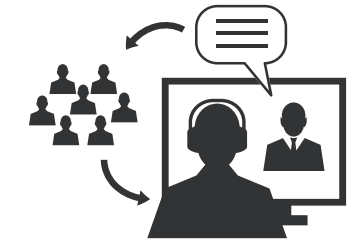
Cost Sharing



Helps meet  
assessing agency  
requirements



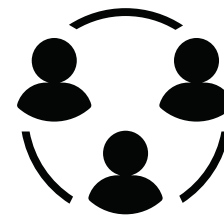
Facilitates  
familiarity and trust



Establishes  
communication  
channels



Creates  
awareness and  
mutual goals



Enhances  
collaboration



Fosters shared  
resources and  
learning



# Assistance with CMS Conditions of Participation

---



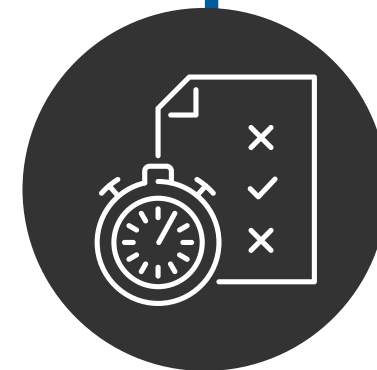
Risk Assessment and Planning



Policies and Procedures



Communication Plans



Training and Testing

# Risk Assessment and Planning

---

- Share Hazard Analysis (All-Hazards Approach) with Regional HCC Partners
- THIRA (Threat and Hazard Identification and Risk Assessment)
- Tools (various tools available to help with Risk and Hazard assessment)
- Discussions with various partners at meetings and workgroups

# Policies and Procedures

---

- Sharing of non-confidential policies and procedures for best practices
- Discuss facility issues with local jurisdictional authorities
- Opportunities to develop policies and procedures for special situations:
  - Closed Points of Dispensing Site (PODs) with Public Health
  - Special annexes (examples below):
    - Infectious Disease (Pandemic and Ebola)
    - Burn
    - Pediatric

# Communication Plan

---

- Develop community partner contacts and "exchange business cards" prior to incident
- Healthcare facilities in your area
- Healthcare facilities to partner with for surge or evacuation
- Local Public Health
- Local Emergency Management
- Local EMS (Medical Control Authorities)
- Regional Medical Coordination Center



# Training and Testing

---

- HCC training available
- HCC exercises involving community partners
- Seminars
- Workshops
- Table-tops
- Functional
- Full-scale

# Resources Provided by Coalitions

---



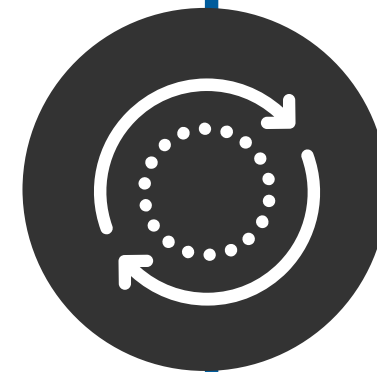
Emergency Assistance



Incident Command  
Communications and  
Operations



Resource Assistance



Emergency, Continuity, and  
Recovery Planning

# Emergency Assistance

---

- Regional Medical Coordination Center Activation
- Mass Communication
- Coordination of Emergency Services
- Supply Distribution
- Alternate Care Sites
- Decontamination Resources
- Evacuation Resources

# Web-Based Incident Command Communications & Operations

## eICS

- Incident command system for responding to emergencies, which creates a common structure for understanding and efficient operations.

## EMResource

- Resource manager which provides situational awareness, facility status reporting, bed and resource availability, and automated notifications.

## EMTrack

- Multi-functional tracking system used to track patients, clients, and event participants and their property

# Web-Based Incident Command Communications & Operations (contd.)

## Michigan Health Alert Network

- Communication system to alert key personnel of adverse health and safety conditions in Michigan. Provides situational awareness about important emergency health-related information.

## Michigan Critical Incident Management System/ WebEOC

- Emergency Management system used for managing, documenting or monitoring emergency responses and activities.

# Resource Assistance

---

- PPE
- 800 Mhz Radios
- Alternate Care Site Trailers
- MEDDRUN / CHEMPACK
- Coordinate Staffing Assistance
- Coordinate Monoclonal Antibody Therapy
- Coordinate procurement of COVID Testing supplies

*Resource distribution depends on supplies on hand and may be coordinated with other regions or healthcare entities within the region. Coalitions do not provide staffing, therapies, or testing.*

# Emergency, Continuity, and Recovery Planning

---

- Emergency Operations Plan (EOP)
- Continuity of Operations Plan (COOP)
- Recovery Plan

The Healthcare Coalition has a regional plan that incorporates all 3 components. The regional plan is informed by the plans of partners. Partners are encouraged to have these plans at their facilities. Plans are often discussed in work groups and subcommittees, then tested during exercises.

40%



Small businesses never  
reopen after a disaster

estimated by  
FEMA



25%



Small businesses who do  
reopen, fail within a  
year.

reported by  
FEMA

90%



smaller companies fail  
within a year unless they  
can resume operations  
within 5 days.

reported by  
FEMA

Continuity is not only important to a business' bottom line, but it has a broader socioeconomic impact regarding employment and services.

Second, the health care system must be maintained following a disaster.

Rapid recovery of operations after an event is critical to the community, which may require medical services.

# Emergency Operations Plan

---

- A plan to document how the facility and staff will operate in an emergency situation.
- Provides the framework for the emergency preparedness program. The emergency plan is developed based on facility- and community-based risk assessments that assist a facility in anticipating and addressing facility, patient, staff and community needs and support continuity of business operations.

# Continuity of Operations Plan

---

- A roadmap for continuing operations under adverse conditions.
- Ensuring the ability to continue essential functions within 12 hours and up to 30 days.
- Ensuring the organization's essential functions can continue to be performed during a wide range of emergencies, including localized acts of nature, accidents and technological or attack-related emergencies.

# Continuity of Operations Plan Checklist

---

- Facility Profile
- Hazard Vulnerability Assessment
- List of Essential Functions
- Essential Personnel
- Critical Resources
- Key Vendors and Suppliers
- Alternate Facility Locations
- Emergency Communications
- Alert and Notification Systems
- Key Contact Check List

# Training & Exercise Opportunities

---

## EDUCATION

[ICS 100](#), [ICS 200](#), [ICS 700](#),  
[ICS 800](#)

ICS 300, ICS 400

[National Healthcare Coalition  
Conference](#)

[Great Lakes Homeland Security  
Conference](#)

[Isolation & Quarantine for Rural  
Communities](#)

[Underserved Populations  
Preparedness Planning for Rural  
Communities](#)

## TRAINING

[Juvare eICS](#)

[Juvare EMResource](#)

[Juvare EMTrack](#)

[MICIMS / WebEOC](#)

Volunteer Reception Center

Public Information Officer

## EXERCISE

Volunteer Reception Center

Radiological

Patient Tracking

Antrim County Aircraft Incident  
Regional Full Scale

# Additional Resources

---

ASPR TRACIE Disaster Behavioral Health Resources at Your Fingertips:

<https://files.asprtracie.hhs.gov/documents/aspr-tracie-dbh-resources-at-your-fingertips.pdf>

Mental Health All-Hazards Disaster Planning Guidance:

<https://www.hsdl.org/?abstract&did=463298>

SAMHSA Disaster Mobile App:

<https://store.samhsa.gov/product/samhsa-disaster>

Northern Behavioral Health Emergency Response Plan Draft:

<https://dph.nv.gov/uploadedFiles/dphnvgov/content/Boards/RBHPB/Meetings/2018/Northern%20Behavioral%20Health%20Emergency%20Response%20Plan%20Draft-%201.5.21.pdf>

California Disaster Behavioral Health Plan:

<https://www.cdph.ca.gov/Programs/EPO/CDPH%20Document%20Library/EOM%20Documents/California%20Disaster%20Behavioral%20Health%20Plan.pdf>

SAMHSA | Developing a Continuity of Operations Plan (COOP):

<https://www.samhsa.gov/section-223/governance-oversight/continuity-operations-plan>

COVID-19 Best Practice Information: Continuity of Operations:

[https://www.fema.gov/sites/default/files/2020-07/fema\\_covid\\_bp\\_continuity-operations.pdf](https://www.fema.gov/sites/default/files/2020-07/fema_covid_bp_continuity-operations.pdf)



# Regional Medical Coordination Center (RMCC)

---

To activate the Region 7 Medical Coordination Center call:

24/7 Emergency Activation Line

Gaylord Regional Communication Center

1-989-732-5141

During your call, include the following information:

- Your name and contact number.
- Your agency or hospital.
- Your request and reason for your request.
- If requesting a resource, exact location to where you need the resource delivered.
- Who will accept and sign for the resource.

# Contacting Region 7 Healthcare Coalition

---

For non-emergency needs, contact and connect with us anytime!

Regional Coordinator: Mark Becmer- [rc@mir7hcc.com](mailto:rc@mir7hcc.com)

Assistant Regional Coordinator: Amanda Reed- [arc@mir7hcc.com](mailto:arc@mir7hcc.com)

Medical Director: Dr. Kal Attie- [kalattie@mac.com](mailto:kalattie@mac.com)

Website: [miregion7.com](http://miregion7.com)

80 Livingston Blvd., Suite 106, Gaylord, MI 49735

P: 989-748-4975

F: 989-748-4980

[linkedin.com/company/region-7-healthcare-coalition](https://www.linkedin.com/company/region-7-healthcare-coalition)

[facebook.com/Region7HCC](https://www.facebook.com/Region7HCC)

[twitter.com/Region7HCC](https://twitter.com/Region7HCC)

[instagram.com/miregion7hcc](https://www.instagram.com/miregion7hcc)